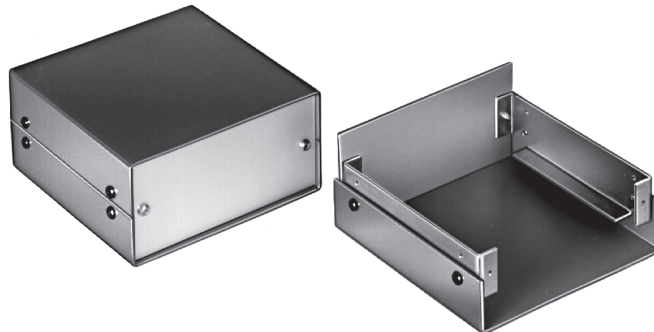


## Schalengehäuse

## Shell Cases

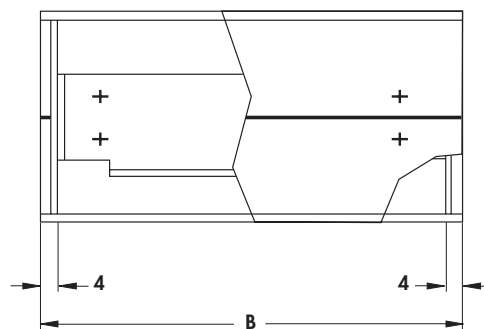
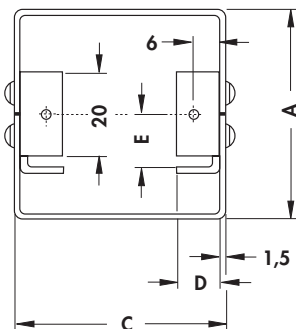
## Boîtiers en demi-coques



- Komplet aus Aluminium.
- Materialstärke allseitig 1,5 mm.
- Schalenbleche lackiert (Strukturlack).
- Deckplatten naturfarbig eloxiert

- completely made of aluminium.
- material thickness 1,5 mm on all sides
- outer shell texture painted
- covers natural colour anodised

- complètement en aluminium.
- épaisseur 1,5 mm à la ronde.
- demi-coquilles laquées (surface texturée)
- couvercles anodisées nature



Art. Nr. Art. No. Art. n°	Maße/Dimensions [mm]					Art. Nr. Art. No. Art. n°	Maße/Dimensions [mm]				
	A	B	C	D	E		A	B	C	D	E
SG 202...	25	75	75	-	-	SG 209...	50	100	150	10	12,5
SG 203...	25	75	100	-	-	SG 210...	50	100	200	10	12,5
SG 205...	25	100	75	-	-	SG 215...	75	150	150	10	25
SG 206...	25	100	100	-	-	SG 216...	75	150	200	10	25
SG 207...	50	100	50	10	-	SG 217...	75	150	250	10	25
SG 208...	50	100	100	10	12,5	SG 218...	75	150	300	10	25

... bitte gewünschte Farbe der Halbschalen angeben:

EV = erikaviolett lackiert (RAL 4003)  
 TB = türkisblau lackiert (RAL 5018)  
 GO = opalgrün lackiert (RAL 6026)  
 BO = ozeanblau lackiert (RAL 5020)  
 SA = schwarz lackiert (RAL 9005)

... please indicate requested colour of the semi-shells:

EV = violet painted (RAL 4003)  
 TB = turquoise blue painted (RAL 5018)  
 GO = opal green painted (RAL 6026)  
 BO = ocean blue painted (RAL 5020)  
 SA = black painted (RAL 9005)

... indiquer la couleur souhaitée des demi-coques:

EV = laqué violet (RAL 4003)  
 TB = laqué bleu turquoise (RAL 5018)  
 GO = laqué vert opale (RAL 6026)  
 BO = laqué bleu océan (RAL 5020)  
 SA = laqué noir (RAL 9005)

L 3

Zubehör  
 Profil-Montage-Gehäuse  
 Kombinationsgehäuse  
 Frontplatten nach Kundenwunsch

Accessories  
 Extruded Assembled Cases  
 Combination Cases  
 Front Panels to Customer's Request

Accessoires  
 Boîtiers à assembler  
 Boîtiers combinés  
 Faces avant à demande du client

→ L 24  
 → L 5  
 → L 7 - 10  
 → L 25 - 26